

THE XL FAMILY OF DEVICES



# CARRY CONFIDENCE WITH YOU

Ultra-reliable critical communications  
designed by and for those on the  
front lines.



# THE XL FAMILY OF DEVICES | KEY FEATURES



## The XL FAMILY OF DEVICES

Forged on the battlefield  
and ready for whatever  
your work demands,  
these ultra-reliable radios  
were designed by and for  
those on the frontlines.



### XL CONVERGE™ SERIES

COMMUNICATE  
WITHOUT LIMITS



### XL ONBOARD™ SERIES

ULTRA-RELIABLE,  
ROAD-READY  
RADIOS



### XL CONNECT™ SERIES

FLEXIBLE.  
AFFORDABLE.  
UNSTOPPABLE.



### XL VIRTUAL™ SERIES


PUSH-TO-TALK  
POWER WITHOUT  
THE HARDWARE



### XL EXTREME™ SERIES

RUGGED AND  
READY FOR  
ANYTHING





LTE-capable,  
P25 radios

Crystal clear audio,  
advanced noise cancellation,  
and advanced data sharing

Built to operate in  
harsh conditions

Long battery life and ergonomic,  
glove-friendly design

# XL CONVERGE™ SERIES

**CONNECT WITHOUT LIMITS**

A radio you can rely on, no matter where  
the mission may take you.

# L3Harris Converged Radio



- **XL-200P:** VHF, UHF, 700/800 MHz, and 900 MHz
- **XL-185P:** Any Single Band
- Full-featured
  - P25 Conventional and Trunked
  - GPS Tier 2 and In-band
- Converged Device
  - Wi-Fi and LTE (including FirstNet) in single device with roaming to LMR
  - Bluetooth (Remote Mic., SCBA, Biometrics, etc.)
- One Tough Radio
  - Rugged construction with I-beam metal frame
  - IP-68 Immersion – 2 meters for up to 4 hours
  - Clean with virtually any common household cleaner

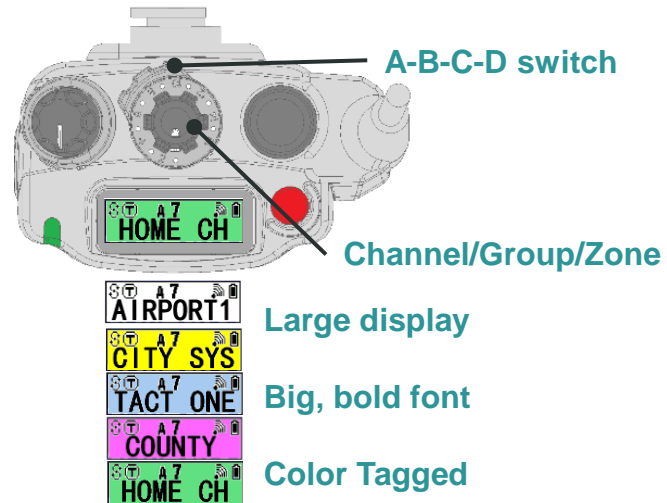




# Advanced User Interface



## VISUAL ZONE CODING



## TOP DOWN OPERATION

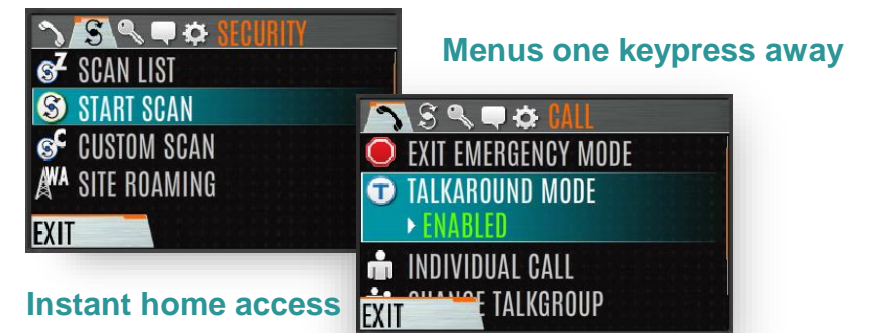
- A-B-C-D provides 64 Talkgroup Access
- Simple Bold Display
- Color Tagging



## BOLD DISPLAY



## INTUITIVE MENUS



# Extreme Audio



## LOUD, CLEAR AUDIO

- Groundbreaking audio design
- 1.5 Watt audio amp
- Woofer and tweeter two-speaker configuration
- Tuned Cavity and Ports
- Crossover Network

## ACTIVE NOISE CANCELLATION

- 3 microphones
- Industry-leading noise reduction



## AUDIO PLAYBACK

- Last call playback
- Menu for last 5 calls
- Programmable to any button
- Reduce system traffic
- Save precious seconds

***You will hear  
this radio***





Loud and clear  
audio and an  
intuitive display

Field upgradeable  
LTE and broadband  
hotspot capabilities

Packs all major LMR  
bands into one  
compact radio.

Modular design offers  
flexible mounting  
configurations for  
a variety of vehicles

# XL ONBOARD™ SERIES

## ULTRA-RELIABLE, ROAD-READY RADIOS

When your mission requires you to be mobile, you need a flexible, high-powered, radio that can move with you.



# XL-Series P25 Mobile Radio



The XL-Series kicks mission-critical interoperability into high gear to keep you connected.

- **XL-200M:** VHF, UHF, 700/800 MHz, and 900 MHz
- **XL-185M:** Any single band
- P25 Phase 2, Conventional, and EDACS®
- Multiple encryption options
- Standard features included:
  - ✓ LTE
  - ✓ Bluetooth®( 4.1)
  - ✓ Noise cancellation
  - ✓ Wi-Fi (IEEE802.11ac)
  - ✓ GPS Tier 2 and In-band
  - ✓ Human Tuned Audio



# The XL Mobile | Design



**Same User Interface and software as XL Portable**

## Improved Installation Process

- Simple Front/remote conversion
- Rail mount system
- Ethernet replaces CAN bus
- Mounting compatible with XG mobile

## Expanded I/O Options

- Keypad Mobile Microphone (KMM)
- 2 x 15W audio outputs on radio
- 2 x 7.5W audio outputs on control head
- Built-in 3W speaker
- USB and Full Serial port
- 3 programmable inputs; 3 programmable outputs

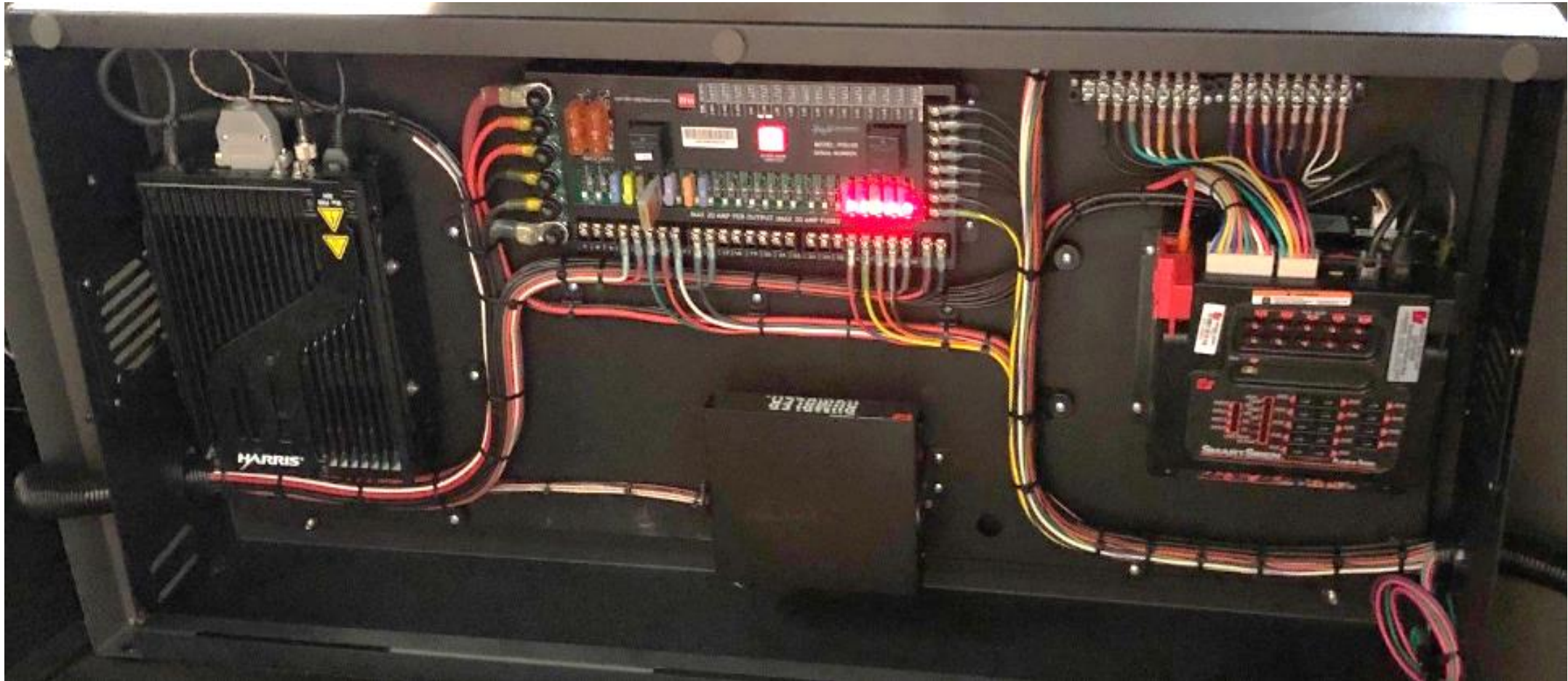


# The way it was....





# The way it is...





GPS, Bluetooth,  
and instant recall

Encrypted voice  
and data for secure  
communications

Wi-Fi enabled voice  
and device  
management

Intuitive, easy-to-use,  
and ergonomic design

# XL CONNECT™ SERIES

**FLEXIBLE. AFFORDABLE. UNSTOPPABLE.**

Uncompromising communications, tailored  
to your needs and fit for your budget.

# XL Connect 95P: Advanced Connectivity

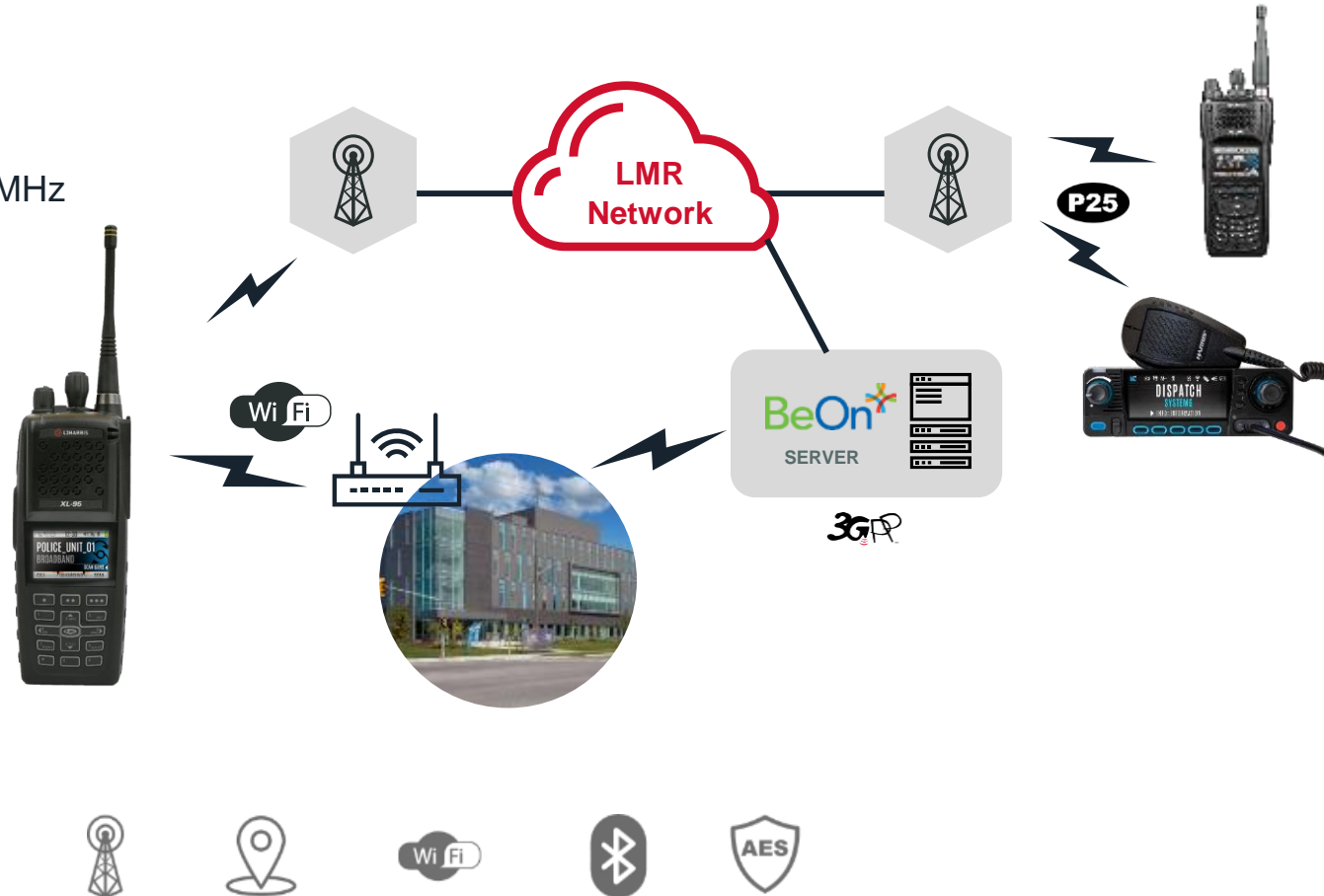


## Land Mobile Radio

- 7/800 763 – 870 MHz

## Wi-Fi

- 2.4 GHz
- 5.2 - 5.8 GHz





# XL-95P Product Overview



## Positioning:

- New product in the XL family to address the mid-tier space
- Easy migration to XL technology for existing XG-75P customers

## Key Features – Retained from 75P and Inherited from XL:

- Compatible with all existing XG-75P accessories – batteries, chargers, carrying cases, mics,
- 7/800 MHz model (Other bands at a later release)
- ABC channel bank switch
- Dual mic noise cancellation
- Color display
- XL Family User Interface
- RB/NRB support in single radio
- Industry leading cellular rejection
- Bluetooth
- Wi-Fi
- GPS
- EDACS
- UL C1D2 Hazloc rating

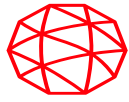
## Features Only Available in Higher Tier XL Offerings

- Top display
- ABCD switch
- Mandown accelerometer
- LTE options
- UI C1D1 Hazloc rating



**XL-95P**

# XL-95P Product Detail



# XL Connect 45P



XL-45P

## XL-45P


- Compatible with all existing XG-75P accessories – batteries, chargers, carrying cases, mics, antennas
- 7/800 MHz model (Other bands at a later release)
- ABC channel bank switch
- Dual mic noise cancellation
- Color display
- XL Family User Interface Limited
- RB/NRB support in single radio
- Industry leading cellular rejection
- Bluetooth
- Wi-Fi
- P25 OTAP
- GPS Optional
- BeON voice on Wi-fi
- Device Management on Wi-Fi
- Available July 2021

## How does XL-45P Compare to XL-95P?



- Pre-packaged with battery, charger, antenna, belt clip, PH1, Encryption lite, AES/DES single key, Wi-fi, Bluetooth
- Gray color
- IP64 (vs. IP68)
- No AES/DES multi-key option available
- No OTAR option available
- No HAZLOC option available
- No EDACS option available





Locate and track  
availability of in-field staff

Share up-to-the moment  
voice and data at the  
touch of a button

Stay connected  
anywhere Wi-Fi or cell  
service is available

Public safety-grade  
encryption to keep  
communications secure

# **XL VIRTUAL™** **SERIES**

**PUSH-TO-TALK POWER WITHOUT  
THE HARDWARE**

Experience the reliability, security and  
simplicity of an LMR network on your  
smartphone, tablet, and PC.

# PTT Over Broadband - BeOn



## Virtual P25 Radio Application

- Developed for Android, iOS and Windows
- Integrated in XL platform
- Uses broadband network
- Reduces traffic loading on system

## Coverage Enhancement

- Extends LMR coverage beyond regional boundaries
- Use LTE or Wi-Fi
- Economical supplemental coverage
- Comms between smartphone

## P25 Based Comms

- Woven into L3Harris system architecture
- IP encapsulated packets
- End to end encryption
- Single purchase – no recurring monthly fees



## The XL FAMILY OF DEVICES

Forged on the battlefield  
and ready for whatever  
your work demands,  
these ultra-reliable radios  
were designed by and for  
those on the frontlines.



### XL CONVERGE™ SERIES

COMMUNICATE  
WITHOUT LIMITS



### XL ONBOARD™ SERIES

ULTRA-RELIABLE,  
ROAD-READY  
RADIOS



### XL CONNECT™ SERIES

FLEXIBLE.  
AFFORDABLE.  
UNSTOPPABLE.



### XL VIRTUAL™ SERIES

PUSH-TO-TALK  
POWER WITHOUT  
THE HARDWARE



### XL EXTREME™ SERIES

RUGGED AND  
READY FOR  
ANYTHING



# Device Management Challenge




Labor Intensive  
Requires Locality

## L3Harris - Device Management Service



- Firmware and personalities to devices over broadband.
- Real-time management of devices in a centralized database.
- Cloud-based management – *you have full control over.*



Built for high-heat and  
potentially explosive  
environments

Personal hotspot  
for capturing and  
communicating  
critical data

Intuitive display  
and large,  
glove-friendly  
keypad

Rugged construction for  
extreme wear and tear

# **XL EXTREME™** **SERIES**

**RUGGED AND READY FOR ANYTHING**

You don't flinch in the face of danger.  
Neither should your radio.

# The EXTREME Radio



## Enhanced Ergonomic design

- Large NFPA rated Emergency button
- Hi-visibility multi-color LED light pipe
- Larger top display
- Accessible top mount option button
- Heavy duty keypad

## NFPA Rated Hardware

- New extreme thermal material
- Reinforced seal design
- Meets 3 meter drop test
- Robust Gorilla Glass lens material
- Unique thermal rated displays and speakers

## High Value Features

- Industry leading noise cancellation
- LTE Converged operation
- Visual zone indication
- Ambient temperature sensor
- Unique Wi-Fi intercom
- Optional in building location (TRX)



The new L3Harris Fire Radio, NFPA Tough, Software Differentiated Product



# The EXTREME Speaker Microphone



## Enhanced Ergonomic design

- Large NFPA rated Emergency button
- Large Channel Knob
- Convenient ramp volume control
- Extra large PTT
- Single large option button

## NFPA Rated Hardware

- New extreme thermal material
- Bluetooth indication
- NFPA rated thermal insulation
- Meets 3 meter drop test
- Unique thermal rated displays and speakers

## High Value Features

- Industry leading noise cancellation
- Large front mounted flashlight / strobe
- Visual zone indication – matches radio
- High Viz identity beacon
- Field replaceable cord with connector options for compatibility with non-NFPA XL radios



The new L3Harris FSM will be the fire user's portable radio control head

# XL Series Feature Summary



SERIES	CONNECT		CONVERGE			EXTREME
Specification	XL-45P	XL-95P	XL-150P	XL-185P	XL-200P	XL-400P
VHF (136-174 MHz)	FUTURE	FUTURE	Y	Y	Y	Y
UHF (378-522 MHz)	FUTURE	FUTURE	Y	Y	Y	Y
700/800 MHz	Y	Y	Y	Y	Y	Y
900 MHz	X	X	X	Y	X	X
Analog Conventional	Y	Y	Y	Y	Y	Y
P25 Conventional	Y	Y	Y	Y	Y	Y
P25 Phase 1 Trunked	Y	Y	Y	Y	Y	Y
P25 Phase 2 Trunked	Y	Y	Y	Y	Y	Y
Single Key DES	Y	Y	Y	Y	Y	Y
Single Key AES	Y	Y	Y	Y	Y	Y
Multi-Key DES Encryption	X	Y	X	Y	Y	Y
Multi-Key AES Encryption	X	Y	X	Y	Y	Y
Over-the-Air Programming	Y	Y	Y	Y	Y	Y
Over-the-Air Rekeying	X	Y	X	Y	Y	Y
Multiband Capable	X	X	X	X	Y	Y
GPS	Y	Y	Y	Y	Y	Y
Bluetooth	Y	Y	Y	Y	Y	Y
Wi-Fi	Y	Y	Y	Y	Y	Y
BeOn	Y	Y	Y	Y	Y	Y
Top Display	X	X	Y	Y	Y	Y
Programmable 3-Position Top Switch	Y	Y	X	X	X	X
Programmable 4-Position Concentric Top Switch	X	X	Y	Y	Y	Y
Programmable 2-Position Concentric Top Switch	X	X	Y	Y	Y	Y
Multi-Microphone Enhanced Noise Cancellation	Y	Y	Y	Y	Y	Y
Voice Annunciation	Y	Y	Y	Y	Y	Y
LTE Capable	X	X	Y	Y	Y	Y
Drop Shock (1.5m onto concrete)	Y	Y	Y	Y	Y	Y
Extreme Drop (3.0m onto concrete)	X	X	X	X	X	Y
1700 Degree Direct Flame @ 10 sec	X	X	X	X	X	Y
500 Degree Temperature @ 5 min	X	X	X	X	X	Y
350 Degree Temperature @ 15 min	X	X	X	X	X	Y



XL400P



XL-200P  
XL-185P  
XL-150P



XL95P



XL45P



XL-200M  
XL-185M



# MISSION-CRITICAL IS WHAT WE DO

It's who we are, and it's  
what we know



BOMB K-9  
SHERIFF

**100% of our R&D is invested in these technologies**